

Ventilation for Health - Enhancing Building Safety in a Post-COVID-19 World | Building Consulting Service



Operations-Team | July 2023



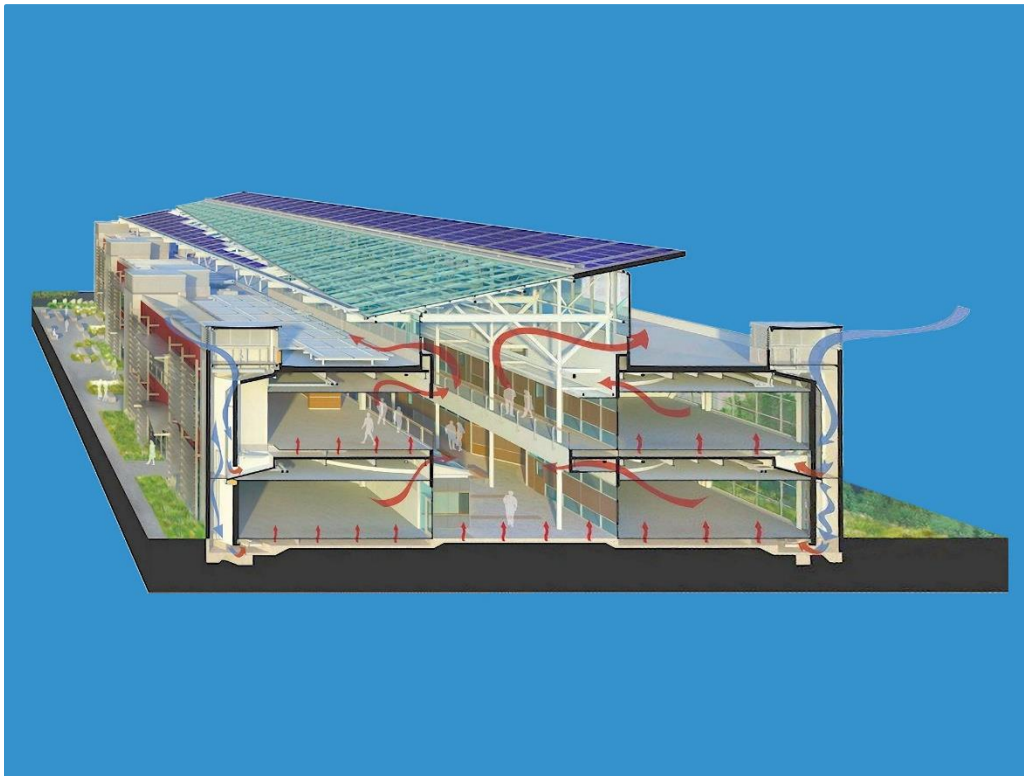
We develop advanced hi-tech solutions, aiming the least impact on the environment



Ventilation for Health - Enhancing Building Safety in a Post-COVID-19 World | Building Consulting Service

Operations-Team | July 2023

Reinforce your return-to-work strategies with NetZero-Action's expert consulting on ventilation and health. Employ our cutting-edge 3D modelling and simulation techniques to maximize safety, air quality, and peace of mind in your buildings.



Building Consulting Service.

NetZero-Action Consulting delivers top-tier solutions for transforming your buildings into safer, healthier environments in response to the COVID-19 pandemic. Following ASHRAE advice, we leverage advanced 3D modelling methods and simulation techniques to help you understand and implement optimal ventilation strategies.

Our expert Computational Fluid Dynamics (CFD) consultants assist you in making informed decisions on factors like room layouts, occupancy levels, hygiene strategies, and the use of face coverings. We further offer easy-to-use tools and visualizations that effectively communicate the risk levels and safety measures, driving adherence and confidence among your workforce.

Check All the Boxes to Success.

- ✓ Expert analysis based on ASHRAE guidelines for ventilation and health.
- ✓ Proven 3D modelling methods and simulation techniques for a comprehensive understanding of airflow and contamination risks.
- ✓ Expert CFD consultants to assist in formulating strategies on ventilation, occupancy levels, and hygiene.
- ✓ Identification of high-risk surfaces and potential contamination areas.
- ✓ Advanced visualization tools to illustrate ventilation strategies and potential risk areas.
- ✓ Strategies for both mechanical and natural ventilation, including variations due to seasonal changes.
- ✓ Clear, easy-to-understand data visualization to drive compliance with safety measures among employees.
- ✓ Comprehensive consulting that factors in energy efficiency, carbon footprint, and the overall well-being of occupants.